

To help you complete this worksheet, use the *World of Insects* book.

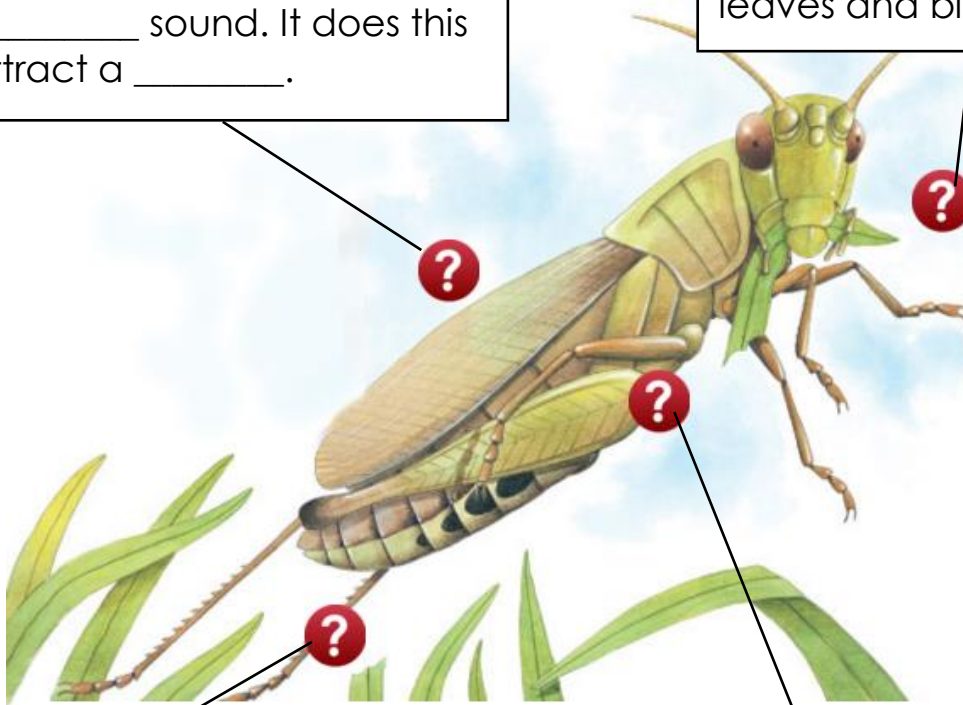


## Grasshopper

Most grasshoppers live in \_\_\_\_\_ and meadows, where there are plenty of plants to eat. Although they have wings, not all grasshoppers can \_\_\_\_\_. When some grasshoppers spot an enemy, such as a frog, they \_\_\_\_\_ high into the air to escape. There are over \_\_\_\_\_ types of grasshoppers.

A grasshopper rubs its back legs against its front wings to make a \_\_\_\_\_ sound. It does this to attract a \_\_\_\_\_.

The grasshopper's lip hides strong \_\_\_\_\_ for chewing leaves and biting enemies.



Powerful back \_\_\_\_\_ help a grasshopper to push itself off the ground.

A grasshopper's colour and \_\_\_\_\_ help to make the insect blend in well with its surroundings.

