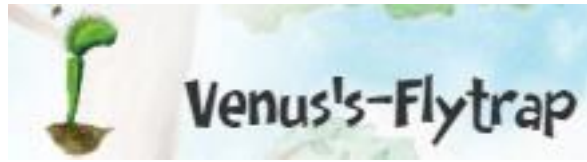


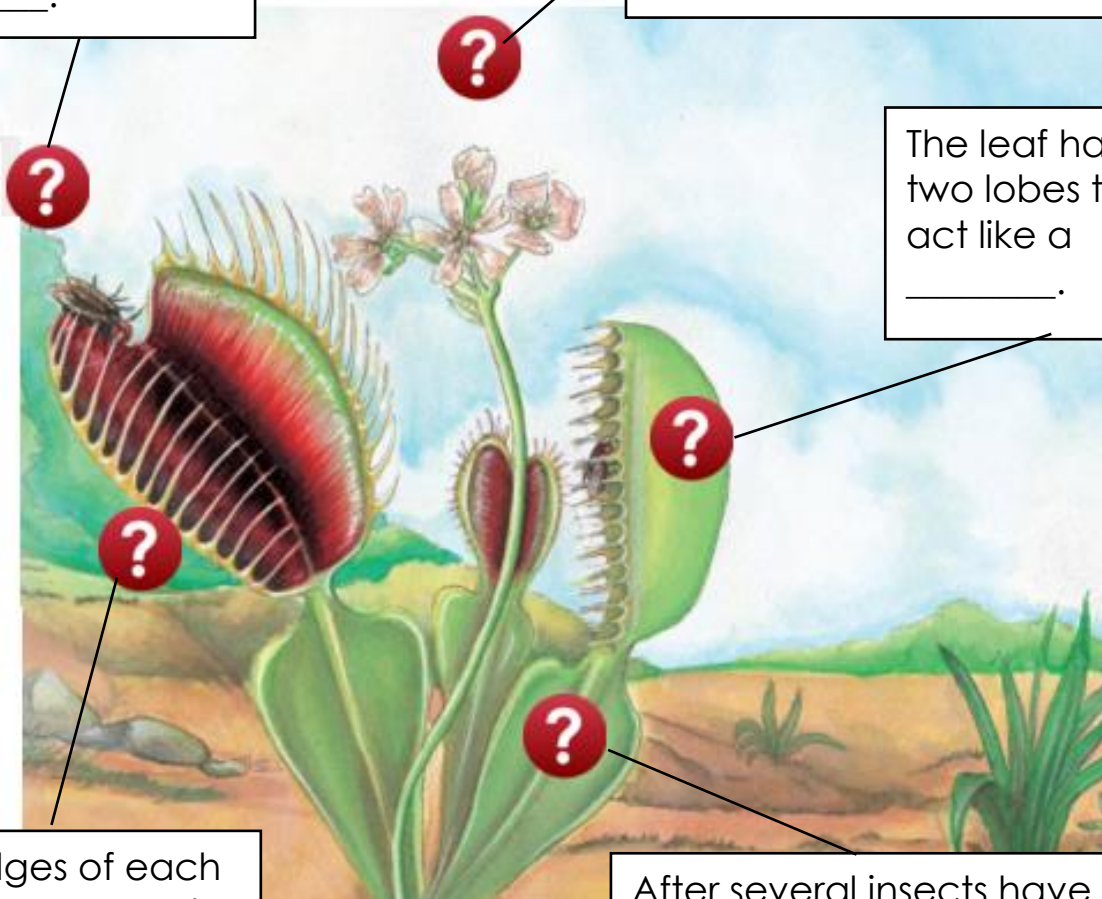
To help you complete this worksheet, use the *Plants Around the World* book.



Venus's-flytrap is a plant that eats \_\_\_\_\_.! When an insect brushes against one of the \_\_\_\_\_ inside the leaf, the leaf's two parts snap \_\_\_\_\_, trapping the insect. The leaves make a \_\_\_\_\_ that helps break down the insect.

An insect is trapped inside the \_\_\_\_\_.

Small, white \_\_\_\_\_ grow at the end of a stalk.



The leaf has two lobes that act like a \_\_\_\_\_.

The edges of each lobe are covered with sharp \_\_\_\_\_.

After several insects have been eaten, the leaf will wither and \_\_\_\_\_.